

Acta Crystallographica Section E

Structure Reports

Online

ISSN 1600-5368

3-Oxo-5-(piperidin-1-yl)-2,3-dihydro-1H-pyrazole-4-carbonitrile

Wedad M. Al-Adiwish,^a W. A. Yaacob,^a D. Adan,^a
Mohamed Ibrahim Mohamed Tahir^b and Mohammad B. Kassim^{a*}

^aSchool of Chemical Sciences and Food Technology, Faculty of Science and Technology, Universiti Kebangsaan Malaysia, 43600 Selangor, Malaysia, and

^bDepartment of Chemistry, Faculty of Science, Universiti Putra Malaysia, 43400 UPM Serdang, Selangor, Malaysia

Correspondence e-mail: mbkassim@ukm.my

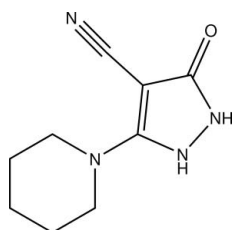
Received 13 October 2011; accepted 10 November 2011

Key indicators: single-crystal X-ray study; $T = 150$ K; mean $\sigma(\text{C}-\text{C}) = 0.003$ Å; R factor = 0.057; wR factor = 0.166; data-to-parameter ratio = 14.2.

In the title compound, $\text{C}_9\text{H}_{12}\text{N}_4\text{O}$, the piperidine ring adopts a chair conformation and makes a dihedral angle of 42.49 (11) $^\circ$ with the approximately planar pyrazole moiety [maximum deviation = 0.038 (2) Å]. In the crystal, $\text{N}-\text{H}\cdots\text{O}$ and $\text{N}-\text{H}\cdots\text{N}$ hydrogen bonds and a weak $\text{C}-\text{H}\cdots\text{O}$ interaction link the molecules into sheets lying parallel to (110) .

Related literature

For pharmacological background, see: Patel *et al.* (1990); Morimoto *et al.* (1990). For related structures see: Zaharan *et al.* (2001); Elgemeie *et al.* (2007); Gouda *et al.* (2010); Shelton *et al.* (2011). For standard bond lengths, see: Allen *et al.* (1987).



Experimental

Crystal data

$\text{C}_9\text{H}_{12}\text{N}_4\text{O}$
 $M_r = 192.23$
Triclinic, $P\bar{1}$
 $a = 7.2667$ (5) Å
 $b = 7.9624$ (5) Å
 $c = 8.8306$ (8) Å
 $\alpha = 89.280$ (6) $^\circ$
 $\beta = 75.934$ (7) $^\circ$

$\gamma = 71.906$ (6) $^\circ$
 $V = 470.01$ (6) Å³
 $Z = 2$
Cu $K\alpha$ radiation
 $\mu = 0.77$ mm⁻¹
 $T = 150$ K
 $0.22 \times 0.19 \times 0.13$ mm

Data collection

Oxford Diffraction Gemini diffractometer
Absorption correction: multi-scan (*CrysAlis RED*; Oxford Diffraction, 2006)
 $T_{\min} = 0.849$, $T_{\max} = 0.906$
5083 measured reflections
1803 independent reflections
1627 reflections with $I > 2\sigma(I)$
 $R_{\text{int}} = 0.013$

Refinement

$R[F^2 > 2\sigma(F^2)] = 0.057$
 $wR(F^2) = 0.166$
 $S = 1.11$
1803 reflections
127 parameters
H-atom parameters constrained
 $\Delta\rho_{\max} = 0.74$ e Å⁻³
 $\Delta\rho_{\min} = -0.61$ e Å⁻³

Table 1

Hydrogen-bond geometry (Å, $^\circ$).

$D-H\cdots A$	$D-H$	$H\cdots A$	$D\cdots A$	$D-H\cdots A$
$\text{N2}-\text{H2}\cdots\text{N4}^i$	0.86	2.32	2.875 (3)	123
$\text{N3}-\text{H3}\cdots\text{O1}^{ii}$	0.86	2.07	2.772 (2)	138
$\text{C4}-\text{H4A}\cdots\text{O1}^{iii}$	0.97	2.54	3.258 (3)	131

Symmetry codes: (i) $x - 1, y, z$; (ii) $-x + 2, -y, -z + 1$; (iii) $x - 1, y + 1, z$.

Data collection: *Gemini User Manual* (Oxford Diffraction, 2006); cell refinement: *CrysAlis RED* (Oxford Diffraction, 2002); data reduction: *CrysAlis RED*; program(s) used to solve structure: *SHELXS97* (Sheldrick, 2008); program(s) used to refine structure: *SHELXL97* (Sheldrick, 2008); molecular graphics: *SHELXTL* (Sheldrick, 2008); software used to prepare material for publication: *SHELXTL*, *PARST* (Nardelli, 1995), *PLATON* (Spek, 2009) and *PUBLICIF* (Westrip, 2010).

The authors thank Universiti Kebangsaan Malaysia for providing facilities and the Ministry of Higher Education Malaysia for the research fund (UKM-GGPM-KPB-098–2010). A scholarship from the Libyan Government to WMA is also greatly appreciated.

Supplementary data and figures for this paper are available from the IUCr electronic archives (Reference: HB6450).

References

- Allen, F. H., Kennard, O., Watson, D. G., Brammer, L., Orpen, A. G. & Taylor, R. (1987). *J. Chem. Soc. Perkin Trans. 2*, pp. S1–19.
- Elgemeie, G. H., Elghandour, A. H. & Abd Elaziz, G. W. (2007). *Synth. Commun.* **37**, 2827–2834.
- Gouda, M. A., Berghot, M. A., Abd El-Ghani, G. E. & Khalil, A. M. (2010). *Eur. J. Med. Chem.* **45**, 1338–1345.
- Morimoto, K., Makino, K., Yamamoto, S. & Sakata, G. (1990). *J. Heterocycl. Chem.* **27**, 807–810.
- Nardelli, M. (1995). *J. Appl. Cryst.* **28**, 659.
- Oxford Diffraction (2002). *CrysAlis RED*. Oxford Diffraction Ltd, Abingdon, England.
- Oxford Diffraction (2006). *Gemini User Manual*. Oxford Diffraction Ltd, Abingdon, England.
- Patel, H. V., Fernandes, P. S. & Vyas, K. A. (1990). *Indian J. Chem. Sect. B*, **29**, 135–141.
- Sheldrick, G. M. (2008). *Acta Cryst.* **A64**, 112–122.
- Shelton, A. H., Stephenson, A., Ward, M. D. & Kassim, M. B. (2011). *Acta Cryst.* **E67**, o2445.
- Spek, A. L. (2009). *Acta Cryst.* **D65**, 148–155.
- Westrip, S. P. (2010). *J. Appl. Cryst.* **43**, 920–925.
- Zaharan, M. A., El-Sharief, A. M. S., El-Gaby, M. S. A., Ammar, Y. A. & El-Said, U. H. (2001). *Farmaco*, **56**, 277–283.

supplementary materials

Acta Cryst. (2011). E67, o3318 [doi:10.1107/S1600536811047714]

3-Oxo-5-(piperidin-1-yl)-2,3-dihydro-1*H*-pyrazole-4-carbonitrile

W. M. Al-Adiwish, W. A. Yaacob, D. Adan, M. I. Mohamed Tahir and M. B. Kassim

Comment

In this paper, we report the synthesis and structure of the new derivative of 3-oxo-5-(piperidin-1-yl)-2,3-dihydro-1*H*-pyrazole-4-carbonitrile. The compound was obtained by cyclization reaction between ethyl 2-cyano-3-(methylthio)-3-(piperidin-1-yl)acrylate and hydrazine.

In the title compound (I), the mean plane of the pyrazole O1/N1/N2/N4/C5/C6/C7/C8/C9 is essentially planar with maximum deviation of -0.038 (2°) for C8 and forms a dihedral angle of 42.49 (11°) with that of the piperidine mean plane N1/C1/C2/C3/C4/C5 (Fig. 1 & Scheme 1). Consequently, a short non-bonding intra D—H...H—X contact forms between the N2—H2 of the pyrazole and the H5B—C5 of the piperidine moieties.

The carbonyl C8=O1 [1.246 (2)] and C6=C7 [1.407 (3) Å] are longer than the average [C=O(1.200 Å)] and C=C [(1.340 Å)] bond lengths, respectively. Whereas the C6—N2 [1.363 (2) Å] and C8—N3 [1.375 (2) Å] bond lengths are shorter than the average C—N [(1.47 Å)] indicative of electron-donating effects of the amino groups. Other bond lengths and angle in the molecules are in the normal ranges (Allen *et al.*, 1987).

In the crystal, intermolecular hydrogen bonds N2—H2...O4 and N3—H3...O1 and a weak C4—H4...O1 interaction link the molecules forming a two-dimensional polymeric network parallel to (110) (Fig. 2).

Experimental

A mixture of ethyl 2-cyano-3-(methylthio)-3-(piperidin-1-yl)acrylate (4 mmol) and hydrazine hydrate (4 mmol) was heated on a water-bath for 2 h. Then, ethanol (20 ml) was added and the mixture was refluxed for another 2 h. The solvent was evaporated and the product was collected, washed with ethanol, and dried. Colourless blocks of (I) were formed by slow evaporation of the compound from ethanol solution. Yield = 90%.

Refinement

H atoms of both C and N atoms were positioned geometrically and allowed to ride on their parent atoms, with $U_{\text{iso}} = 1.2U_{\text{eq}}$ (C) for CH₂ 0.97 Å. Hydrogen atoms attached to N were also positioned geometrically and allowed to ride on their parent atoms and with $U_{\text{iso}}(\text{H}) = 1.2U_{\text{eq}}(\text{N})$ for N—H 0.86 Å.

Figures

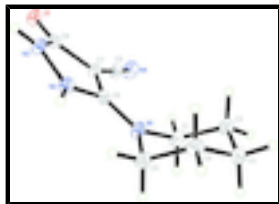


Fig. 1. The molecular structure of (I), with displacement ellipsoids are drawn at the 30% probability level.

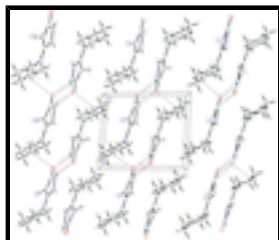


Fig. 2. Crystal packing of (I) viewed down the *a* axis. Hydrogen bonds [N—H...O (*x-l*, *y*, *z* & *-x + 2*, *-y*, *-z*) N—H...N (*x-l*, *y + l*, *z*)] are drawn as dashed lines.

3-Oxo-5-(piperidin-1-yl)-2,3-dihydro-1*H*-pyrazole-4-carbonitrile

Crystal data

$C_9H_{12}N_4O$

$M_r = 192.23$

Triclinic, $P\bar{1}$

Hall symbol: $-P\ 1$

$a = 7.2667$ (5) Å

$b = 7.9624$ (5) Å

$c = 8.8306$ (8) Å

$\alpha = 89.280$ (6)°

$\beta = 75.934$ (7)°

$\gamma = 71.906$ (6)°

$V = 470.01$ (6) Å³

$Z = 2$

$F(000) = 204$

$D_x = 1.358$ Mg m⁻³

Melting point: 527 K

Cu $K\alpha$ radiation, $\lambda = 1.54178$ Å

Cell parameters from 3129 reflections

$\theta = 5-71^\circ$

$\mu = 0.77$ mm⁻¹

$T = 150$ K

Block, colourless

$0.22 \times 0.19 \times 0.13$ mm

Data collection

Oxford Diffraction Gemini diffractometer

Radiation source: fine-focus sealed tube graphite

$\omega/2\theta$ scans

Absorption correction: multi-scan (*CrysAlis RED*; Oxford Diffraction, 2006)

$T_{\min} = 0.849$, $T_{\max} = 0.906$

5083 measured reflections

1803 independent reflections

1627 reflections with $I > 2\sigma(I)$

$R_{\text{int}} = 0.013$

$\theta_{\text{max}} = 70.9^\circ$, $\theta_{\text{min}} = 5.2^\circ$

$h = -8 \rightarrow 8$

$k = -9 \rightarrow 9$

$l = -10 \rightarrow 10$

Refinement

Refinement on F^2

Primary atom site location: structure-invariant direct methods

Least-squares matrix: full

$$R[F^2 > 2\sigma(F^2)] = 0.057$$

$$wR(F^2) = 0.166$$

$$S = 1.11$$

1803 reflections

127 parameters

0 restraints

Secondary atom site location: difference Fourier map

Hydrogen site location: inferred from neighbouring sites

H-atom parameters constrained

$$w = 1/[\sigma^2(F_o^2) + (0.0971P)^2 + 0.2641P]$$

$$\text{where } P = (F_o^2 + 2F_c^2)/3$$

$$(\Delta/\sigma)_{\max} < 0.001$$

$$\Delta\rho_{\max} = 0.74 \text{ e } \text{\AA}^{-3}$$

$$\Delta\rho_{\min} = -0.61 \text{ e } \text{\AA}^{-3}$$

Special details

Experimental. The crystal was placed in the cold stream of an Oxford Cryosystems open-flow nitrogen cryostat (Cosier & Glazer, 1986) with a nominal stability of 0.1 K.

Cosier, J. & Glazer, A.M., 1986. *J. Appl. Cryst.* 105 107.

Geometry. All e.s.d.'s (except the e.s.d. in the dihedral angle between two l.s. planes) are estimated using the full covariance matrix. The cell e.s.d.'s are taken into account individually in the estimation of e.s.d.'s in distances, angles and torsion angles; correlations between e.s.d.'s in cell parameters are only used when they are defined by crystal symmetry. An approximate (isotropic) treatment of cell e.s.d.'s is used for estimating e.s.d.'s involving l.s. planes.

Refinement. Refinement of F^2 against ALL reflections. The weighted R -factor wR and goodness of fit S are based on F^2 , conventional R -factors R are based on F , with F set to zero for negative F^2 . The threshold expression of $F^2 > \sigma(F^2)$ is used only for calculating R -factors(gt) *etc.* and is not relevant to the choice of reflections for refinement. R -factors based on F^2 are statistically about twice as large as those based on F , and R -factors based on ALL data will be even larger.

Fractional atomic coordinates and isotropic or equivalent isotropic displacement parameters (\AA^2)

	<i>x</i>	<i>y</i>	<i>z</i>	$U_{\text{iso}}^*/U_{\text{eq}}$
O1	1.2334 (2)	0.03312 (18)	0.39572 (17)	0.0334 (4)
N1	0.8756 (2)	0.6211 (2)	0.2901 (2)	0.0306 (4)
N2	0.8011 (2)	0.3667 (2)	0.38329 (19)	0.0273 (4)
H2	0.6730	0.4130	0.4070	0.033*
N3	0.9078 (2)	0.1884 (2)	0.39566 (19)	0.0285 (4)
H3	0.8563	0.1043	0.4146	0.034*
N4	1.4774 (3)	0.3703 (3)	0.2487 (2)	0.0397 (5)
C1	1.0124 (3)	0.7167 (3)	0.2139 (3)	0.0349 (5)
H1A	1.1496	0.6418	0.2014	0.042*
H1B	0.9907	0.8218	0.2789	0.042*
C2	0.9771 (4)	0.7692 (3)	0.0547 (3)	0.0394 (5)
H2A	1.0165	0.6635	-0.0144	0.047*
H2B	1.0596	0.8413	0.0094	0.047*
C3	0.7585 (4)	0.8722 (3)	0.0673 (3)	0.0424 (6)
H3A	0.7234	0.9851	0.1253	0.051*
H3B	0.7386	0.8954	-0.0366	0.051*
C4	0.6237 (3)	0.7685 (3)	0.1497 (3)	0.0380 (5)
H4A	0.4847	0.8390	0.1628	0.046*
H4B	0.6491	0.6610	0.0865	0.046*

supplementary materials

C5	0.6632 (3)	0.7218 (3)	0.3084 (2)	0.0333 (5)
H5A	0.6282	0.8293	0.3742	0.040*
H5B	0.5808	0.6517	0.3588	0.040*
C6	0.9374 (3)	0.4540 (2)	0.3267 (2)	0.0249 (4)
C7	1.1293 (3)	0.3363 (2)	0.3210 (2)	0.0252 (4)
C8	1.1054 (3)	0.1702 (2)	0.3729 (2)	0.0262 (4)
C9	1.3185 (3)	0.3601 (3)	0.2816 (2)	0.0289 (5)

Atomic displacement parameters (\AA^2)

	U^{11}	U^{22}	U^{33}	U^{12}	U^{13}	U^{23}
O1	0.0258 (7)	0.0273 (7)	0.0420 (8)	-0.0030 (6)	-0.0067 (6)	0.0098 (6)
N1	0.0276 (9)	0.0285 (9)	0.0356 (9)	-0.0062 (7)	-0.0116 (7)	0.0092 (7)
N2	0.0200 (8)	0.0254 (8)	0.0343 (9)	-0.0032 (6)	-0.0082 (6)	0.0071 (6)
N3	0.0254 (8)	0.0232 (8)	0.0371 (9)	-0.0070 (7)	-0.0092 (7)	0.0072 (6)
N4	0.0283 (10)	0.0412 (11)	0.0545 (11)	-0.0131 (8)	-0.0169 (8)	0.0118 (8)
C1	0.0353 (11)	0.0276 (10)	0.0462 (12)	-0.0126 (9)	-0.0152 (9)	0.0095 (9)
C2	0.0445 (13)	0.0297 (11)	0.0387 (12)	-0.0095 (9)	-0.0038 (9)	0.0084 (9)
C3	0.0532 (14)	0.0321 (11)	0.0331 (11)	-0.0007 (10)	-0.0116 (10)	0.0076 (9)
C4	0.0364 (11)	0.0332 (11)	0.0388 (11)	0.0013 (9)	-0.0154 (9)	0.0018 (9)
C5	0.0295 (11)	0.0274 (10)	0.0382 (11)	-0.0016 (8)	-0.0093 (8)	0.0061 (8)
C6	0.0271 (10)	0.0274 (10)	0.0215 (8)	-0.0078 (8)	-0.0095 (7)	0.0035 (7)
C7	0.0244 (9)	0.0259 (10)	0.0257 (9)	-0.0066 (7)	-0.0090 (7)	0.0029 (7)
C8	0.0255 (9)	0.0261 (9)	0.0252 (9)	-0.0050 (7)	-0.0071 (7)	0.0016 (7)
C9	0.0298 (11)	0.0269 (10)	0.0318 (10)	-0.0070 (8)	-0.0141 (8)	0.0065 (8)

Geometric parameters (\AA , $^\circ$)

O1—C8	1.246 (2)	C2—H2A	0.9700
N1—C6	1.329 (3)	C2—H2B	0.9700
N1—C1	1.467 (3)	C3—C4	1.520 (3)
N1—C5	1.471 (3)	C3—H3A	0.9700
N2—C6	1.376 (2)	C3—H3B	0.9700
N2—N3	1.408 (2)	C4—C5	1.517 (3)
N2—H2	0.8600	C4—H4A	0.9700
N3—C8	1.362 (3)	C4—H4B	0.9700
N3—H3	0.8600	C5—H5A	0.9700
N4—C9	1.148 (3)	C5—H5B	0.9700
C1—C2	1.520 (3)	C6—C7	1.407 (3)
C1—H1A	0.9700	C7—C9	1.406 (3)
C1—H1B	0.9700	C7—C8	1.442 (3)
C2—C3	1.521 (3)		
C6—N1—C1	123.24 (17)	C2—C3—H3B	109.5
C6—N1—C5	122.91 (17)	H3A—C3—H3B	108.1
C1—N1—C5	113.60 (16)	C5—C4—C3	109.84 (19)
C6—N2—N3	108.06 (14)	C5—C4—H4A	109.7
C6—N2—H2	126.0	C3—C4—H4A	109.7
N3—N2—H2	126.0	C5—C4—H4B	109.7

C8—N3—N2	109.28 (15)	C3—C4—H4B	109.7
C8—N3—H3	125.4	H4A—C4—H4B	108.2
N2—N3—H3	125.4	N1—C5—C4	110.09 (17)
N1—C1—C2	109.99 (17)	N1—C5—H5A	109.6
N1—C1—H1A	109.7	C4—C5—H5A	109.6
C2—C1—H1A	109.7	N1—C5—H5B	109.6
N1—C1—H1B	109.7	C4—C5—H5B	109.6
C2—C1—H1B	109.7	H5A—C5—H5B	108.2
H1A—C1—H1B	108.2	N1—C6—N2	120.17 (17)
C1—C2—C3	111.40 (19)	N1—C6—C7	132.01 (18)
C1—C2—H2A	109.3	N2—C6—C7	107.82 (16)
C3—C2—H2A	109.3	C9—C7—C6	131.41 (17)
C1—C2—H2B	109.3	C9—C7—C8	121.20 (17)
C3—C2—H2B	109.3	C6—C7—C8	107.35 (16)
H2A—C2—H2B	108.0	O1—C8—N3	124.15 (18)
C4—C3—C2	110.68 (18)	O1—C8—C7	129.26 (18)
C4—C3—H3A	109.5	N3—C8—C7	106.58 (16)
C2—C3—H3A	109.5	N4—C9—C7	176.5 (2)
C4—C3—H3B	109.5		

Hydrogen-bond geometry (\AA , $^\circ$)

$D-H\cdots A$	$D-H$	$H\cdots A$	$D\cdots A$	$D-H\cdots A$
N2—H2 \cdots N4 ⁱ	0.86	2.32	2.875 (3)	123
N3—H3 \cdots O1 ⁱⁱ	0.86	2.07	2.772 (2)	138
C4—H4A \cdots O1 ⁱⁱⁱ	0.97	2.54	3.258 (3)	131

Symmetry codes: (i) $x-1, y, z$; (ii) $-x+2, -y, -z+1$; (iii) $x-1, y+1, z$.

Fig. 1

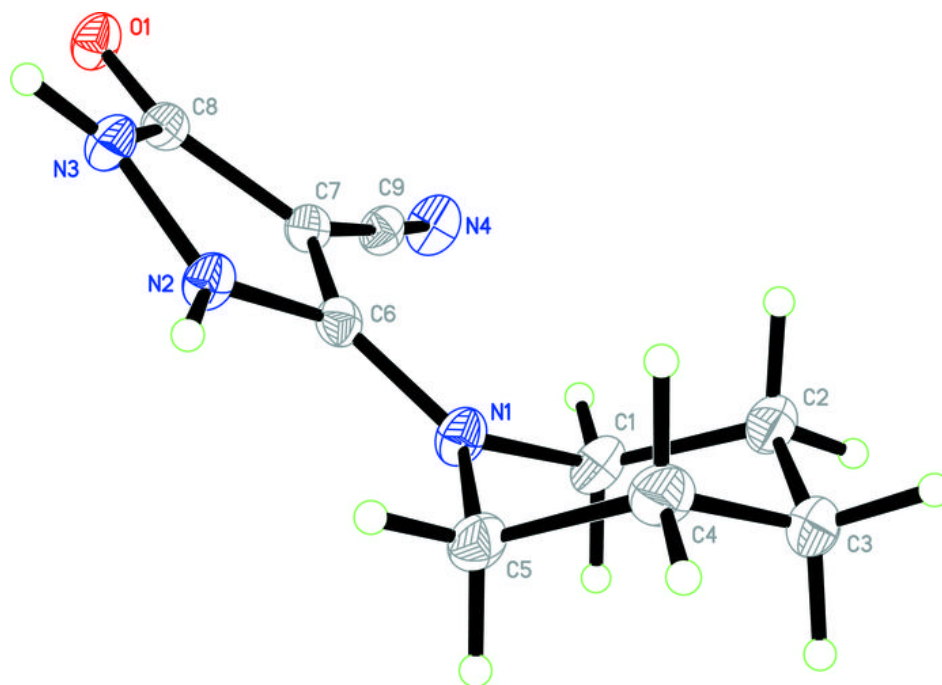


Fig. 2

